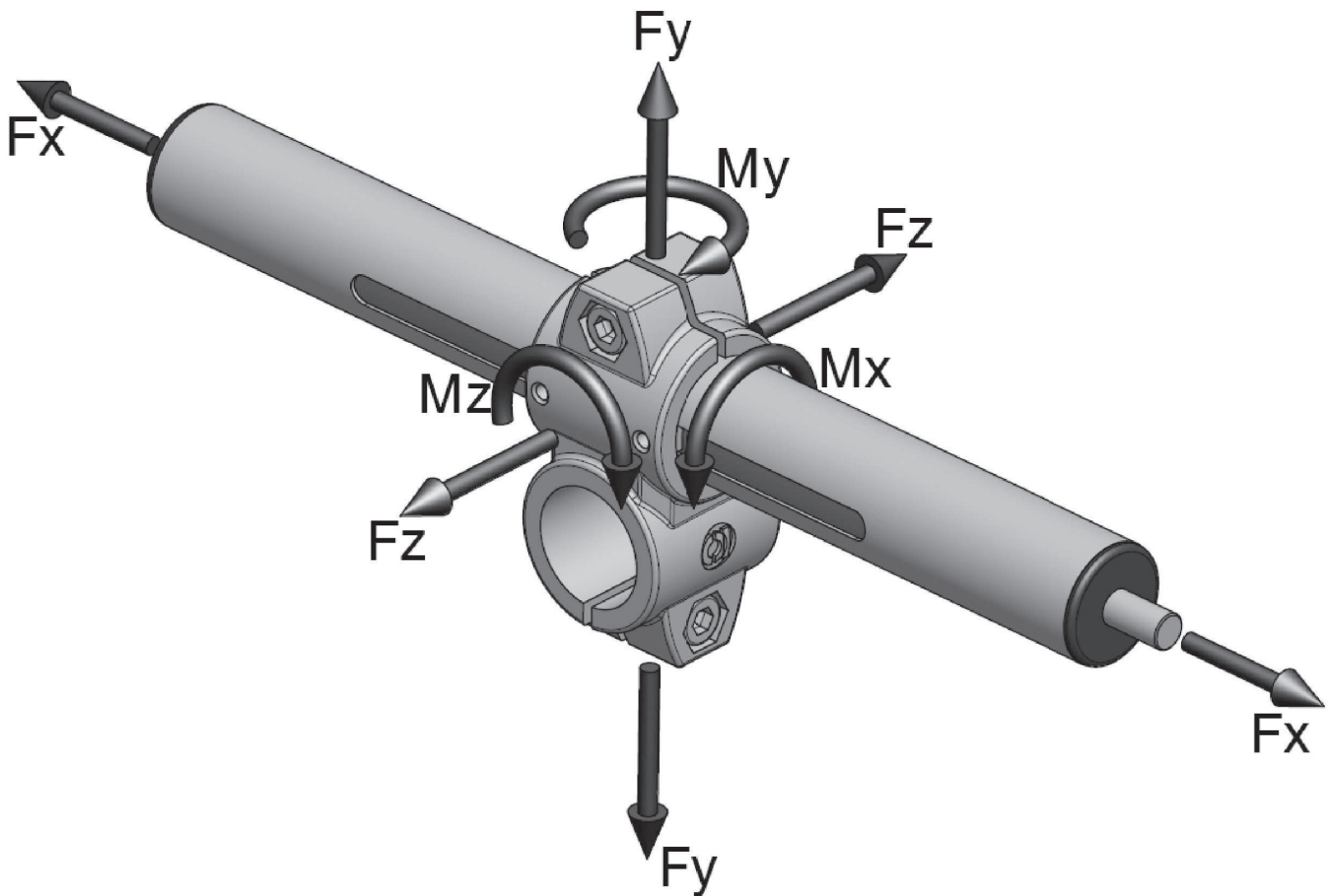


Belastungsdaten / Load data



Belastungsdaten / Load data

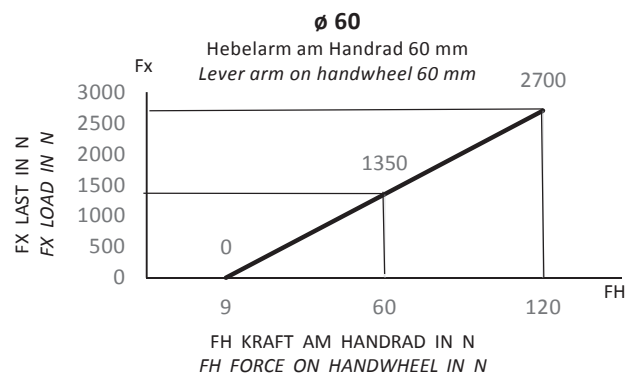
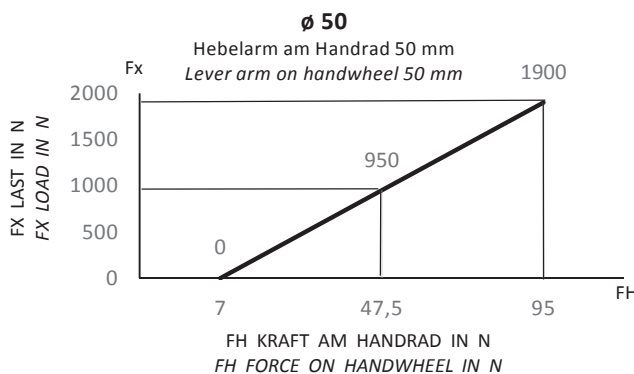
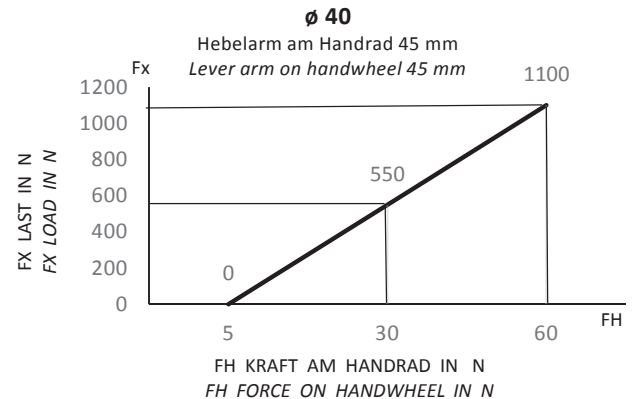
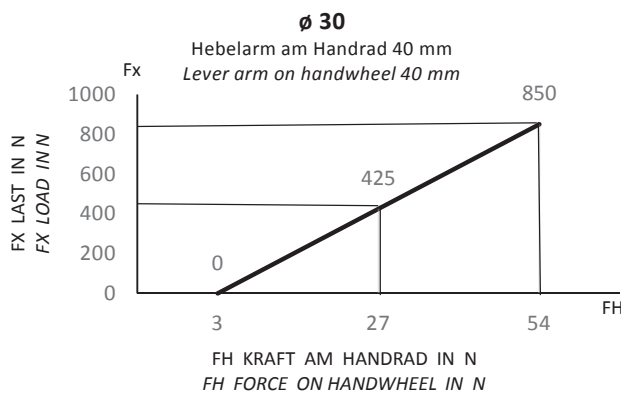
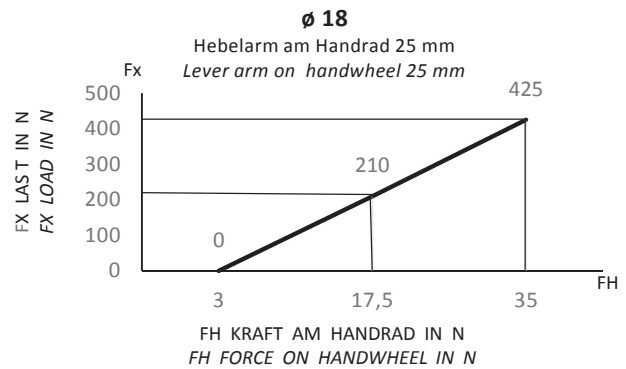
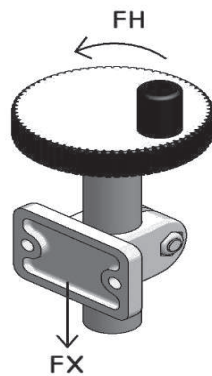
Nenndurchmesser Nominal diameter	Kraft Fx in N bei Lges = 500 mm Force Fx in N at total length = 500 mm	Kraft Fy in N bei Lges = 500 mm Force Fy in N at total length = 500 mm	Kraft Fy in N bei Lges = 1000 mm Force Fy in N at total length = 1000 mm	Kraft Fy in N bei Lges = 1500 mm Force Fy in N at total length = 1500 mm	Kraft Fz in N bei Lges = 500 mm Force Fz in N at total length = 500 mm	Kraft Fz in N bei Lges = 1000 mm Force Fz in N at total length = 1000 mm	Kraft Fz in N bei Lges = 1500 mm Force Fz in N at total length = 1500 mm	Moment Mx in Nm Moment Mx in Nm	Moment My in Nm Moment My in Nm	Moment Mz in Nm Moment Mz in Nm
18	400	80	15	-	65	10	-	1,5	4,5	4,5
30	850	500	70	15	550	55	10	6,5	15	15
40	1100	2150	250	65	1900	150	50	15	42	42
50	1750	3100	650	150	3100	650	150	29	69	69
60	2600	4550	1500	400	4550	1400	350	45	125	125

Important notice: Explanation of the order number (order codes) and additionally some order examples see page 15 + 16. Further options for clamps, like other screws, clamping levers in different sizes, surface treatment and coating, and special treatments see page 18 and upwards. Suitable tubes in steel, stainless steel and aluminium up to maximum 6000 mm in any desired length (up from 500 mm with no extra charge for cutting), inside and outside deburred, see page 122 and upwards.

INOCON GmbH
Industriestraße 31 • 53359 Rheinbach
Tel.: (+49) 0 22 26 - 909 87- 0
Fax: (+49) 0 22 26 - 909 87-99

- 1
- 1.1
- 1.2
- 1.3
- 1.4
- 1.5
- 2**
- 2.1
- 2.2
- 2.3
- 3
- 3.1
- 3.2
- 3.3

ermittelt bei mittigen Lastangriff am jeweiligen Schlitten /
 Schlitten ohne Gleitbuchse / Führungsrohre verchromt
*determined at central load application on each guide element /
 guide element without sliding bush / guide tubes chromed*



Hinweis: In obigen Schaubildern sind unverbindliche ca. Werte für die jeweiligen Betätigungskräfte am Handrad angegeben. Ursachen für Abweichungen können auftreten durch: • Schmierzustand von Gewindespindel / Schlitten, • Toleranzpaarungen von Führungsrohr / Schlittenbohrungen, • eingestelltes Laufspiel, • außermittigen Lastangriff * (unverbindliche Richtwerte ohne Gewähr)

Note: In the above charts, non-binding approximate values for the respective actuating forces at the handwheel are indicated. Causes of deviations may be caused by: • lubrication condition of the threaded spindle / guide element, • tolerance pairs of guide tube / slide holes, • adjusted running clearance, • eccentric load application * (non-binding guidelines without guarantee)