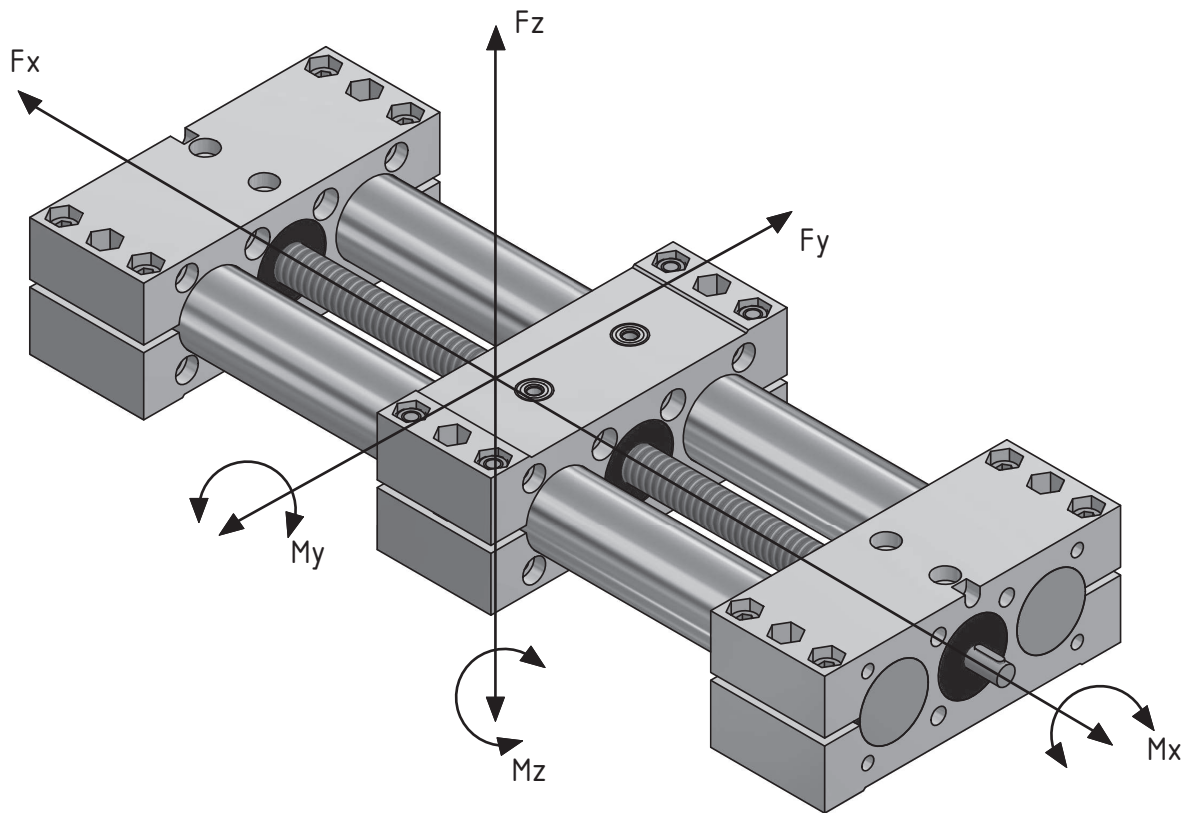


### Belastungsdaten / Load data



**Belastungsdaten INOCON Doppelrohr-Verstelleinheit**  
**Load data INOCON double tube linear unit**

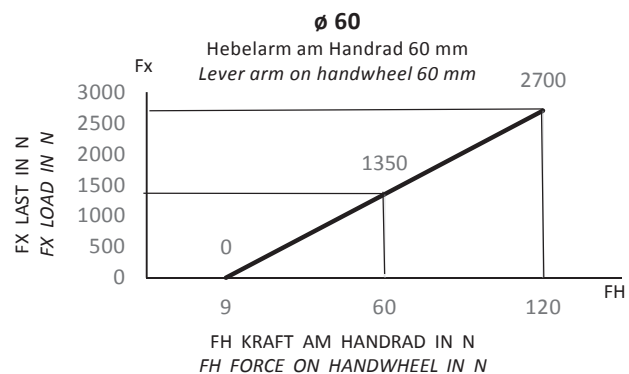
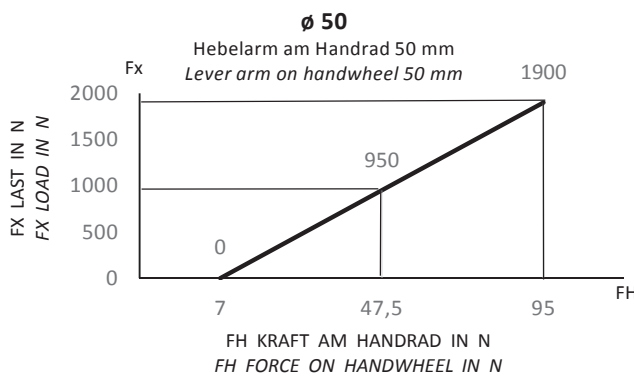
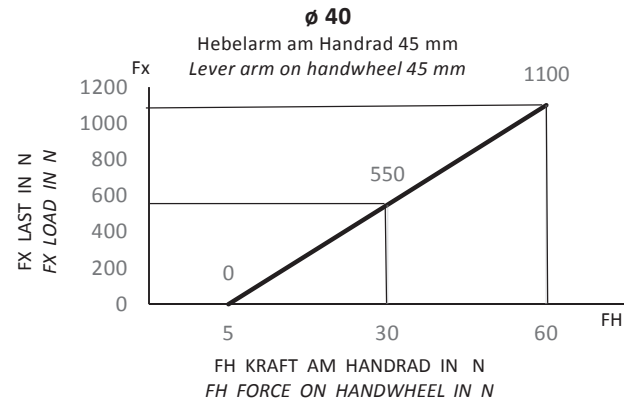
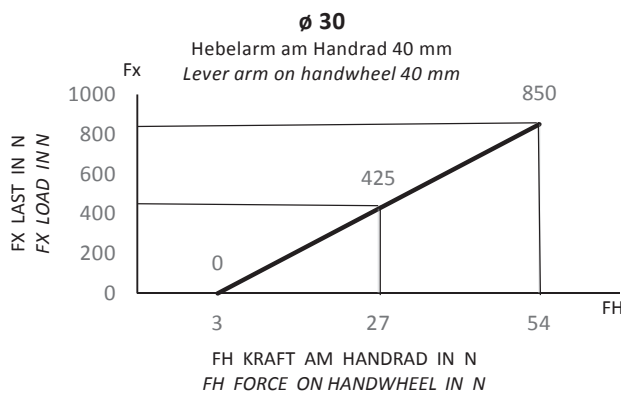
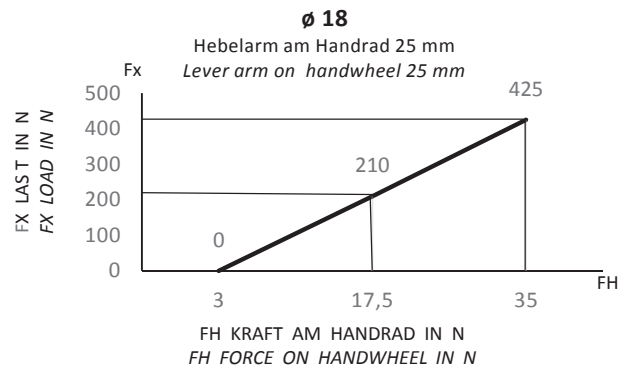
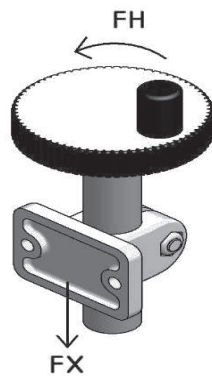
Doppelrohr-Verstelleinheit Double tube linear unit	Fx		Fy		Fz			Mx	My	Mz
Gesamtlänge / Total length	500	500	1000	1500	500	1000	1500			
Einzelschlitten ILDS 18 11 Single guide element ILDS 18 11	425 N	215 N	110 N	-	105 N	80 N	-	22 Nm	35 Nm	40 Nm
Doppelschlitten ILDS 18 12 Double guide element ILDS 18 12	425 N	290 N	180 N	-	140 N	105 N	-	42 Nm	50 Nm	75 Nm
Einzelschlitten ILDS 30 11 Single guide element ILDS 30 11	850 N	1100 N	900 N	550 N	600 N	350 N	150 N	100 Nm	100 Nm	100 Nm
Doppelschlitten ILDS 30 12 Double guide element ILDS 30 12	850 N	1550 N	1300 N	800 N	700 N	550 N	250 N	150 Nm	150 Nm	200 Nm
Einzelschlitten ILDS 40 11 Single guide element ILDS 40 11	1100 N	3700 N	2800 N	1400 N	2100 N	600 N	180 N	150 Nm	140 Nm	170 Nm
Doppelschlitten ILDS 40 12 Double guide element ILDS 40 12	1100 N	6400 N	3400 N	1900 N	2400 N	750 N	280 N	180 Nm	210 Nm	260 Nm
Einzelschlitten ILDS 50 11 Single guide element ILDS 50 11	1900 N	3850 N	2400 N	2100 N	3100 N	700 N	200 N	180 Nm	220 Nm	290 Nm
Doppelschlitten ILDS 50 12 Double guide element ILDS 50 12	1900 N	7500 N	5100 N	2700 N	3400 N	850 N	340 N	250 Nm	350 Nm	530 Nm
Einzelschlitten ILDS 60 11 Single guide element ILDS 60 11	2700 N	6900 N	5700 N	5100 N	6300 N	2800 N	360 N	320 Nm	350 Nm	500 Nm
Doppelschlitten ILDS 60 12 Double guide element ILDS 60 12	2700 N	11500 N	9500 N	8200 N	7500 N	3100 N	610 N	550 Nm	650 Nm	980 Nm

Spezielle Belastungswerte erhalten Sie zusätzlich auf Anfrage / Special load data you will also receive on request

*Important notice:* Explanation of the order number (order codes) and additionally some order examples see page 15 + 16. Further options for clamps, like other screws, clamping levers in different sizes, surface treatment and coating, and special treatments see page 18 and upwards. Suitable tubes in steel, stainless steel and aluminium up to maximum 6000 mm in any desired length (up from 500 mm with no extra charge for cutting), inside and outside deburred, see page 122 and upwards.

INOCON GmbH  
Industriestraße 31 • 53359 Rheinbach  
Tel.: (+49) 0 22 26 - 909 87- 0  
Fax: (+49) 0 22 26 - 909 87-99

ermittelt bei mittigen Lastangriff am jeweiligen Schlitten /  
 Schlitten ohne Gleitbuchse / Führungsrohre verchromt  
*determined at central load application on each guide element /  
 guide element without sliding bush / guide tubes chromed*



Hinweis: In obigen Schaubildern sind unverbindliche ca. Werte für die jeweiligen Betätigungskräfte am Handrad angegeben. Ursachen für Abweichungen können auftreten durch: • Schmierzustand von Gewindespindel / Schlitten, • Toleranzpaarungen von Führungsrohr / Schlittenbohrungen, • eingestelltes Laufspiel, • außermittigen Lastangriff \* (unverbindliche Richtwerte ohne Gewähr)

Note: In the above charts, non-binding approximate values for the respective actuating forces at the handwheel are indicated. Causes of deviations may be caused by: • lubrication condition of the threaded spindle / guide element, • tolerance pairs of guide tube / slide holes, • adjusted running clearance, • eccentric load application \* (non-binding guidelines without guarantee)